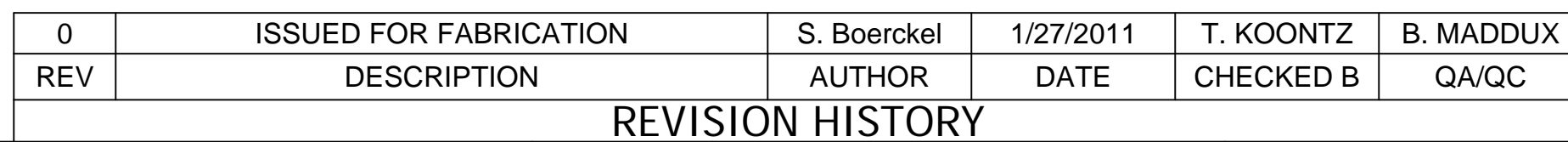



Technical drawing of a trapezoidal cross-section. The top horizontal edge is 14.00 units long. The bottom horizontal edge is 14.00 units long. The left vertical edge is 2.00 units high. The right vertical edge is 2.00 units high. The top-left corner is cut off by a diagonal line, and the top-right corner is also cut off by a diagonal line. The horizontal distance from the left vertical edge to the start of the diagonal cut is 2.00 units. The horizontal distance from the end of the diagonal cut to the right vertical edge is 2.00 units.

Technical drawing of a roof plan. The drawing shows a rectangular area with a horizontal centerline. Two circular features, each containing a cross, are positioned on the left side. Dimensions are indicated by arrows and numbers:

- A vertical dimension of 1.75 is shown on the left side, indicating the height of the circular features from the centerline.
- A horizontal dimension of 1.59 is shown below the centerline, indicating the distance from the left edge to the first circular feature.
- A horizontal dimension of 4.41 is shown below the centerline, indicating the distance between the two circular features.
- A horizontal dimension of 13.50 is shown below the centerline, indicating the total width of the roof plan.



© COPYRIGHT, 2009, PRO STEEL MANUFACTURING ALL RIGHTS RESERVED. THIS DRAWING IS THE PROPRIETARY AND/OR CONFIDENTIAL PROPERTY OF PRO STEEL MANUFACTURING AND IS LOANED IN STRICT CONFIDENCE WITH THE UNDERSTANDING THAT IT WILL NOT BE REPRODUCED NOR USED FOR ANY PURPOSE EXCEPT THAT FOR WHICH IT IS LOANED. IT SHALL BE IMMEDIATELY RETURNED ON DEMAND, AND IS SUBJECT TO ALL OTHER TERMS AND CONDITIONS OF ANY WRITTEN AGREEMENT OR PURCHASE ORDER WHICH INCORPORATES OR RELATES TO THIS DRAWING.	UNLESS OTHERWISE SPECIFIED DIMENSIONS ARE IN INCHES TOLERANCES ON		DRAWN S. Boerckel CHECKED	1/27/2011	 <div>2201 ProEnergy Blvd BENICIA, MISSOURI 63021 USA PHONE: 1-800-829-5100 FAX: 1-800-829-5180</div>				
	DECIMALS		T. KOONTZ	2/3/2011					TITLE PIPE SUPPORTS
	X.X ± 0.10 X.XX ± 0.06 X.XXX ± 0.03 HOLE DIA ± 0.03 ANGLES ± 0.50° SURFACE <input checked="" type="checkbox"/> HFS-SF	QA B. MADDUX REVIEWER	2/3/2011	LIQUID FUEL FORWARDING SKID - 7EA					
	SQUARENESS ± 0.06 DO NOT SCALE DRAWING	PROJECT NO 409-2956-1 CUSTOMER EDC - MARGARITA ISLAND JOB NO	SIZE D				ML: 	DWG NO 409-2956-LFF7EA-0790 -1	REV 0
					SCALE: 1" = 1" WEIGHT: 4 lbmass SHEET 1				

TITLE	PIPE SUPPORTS
-------	---------------

LIQUID FUEL FORWARDING SKID - 7EA

SIZE D	ML:	DWG NO 409-2956-LFF7EA-0790 -1	REV 0
SCALE: 1" = 1"		WEIGHT: 4 lbmass	SHEET 1